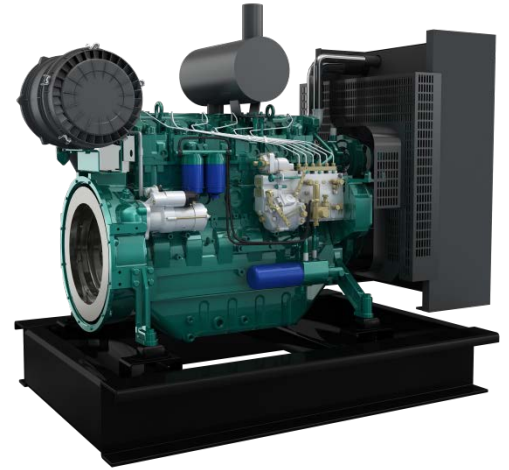


## DEUTZ DIESEL ENGINE MODEL WP10D264E200



<b>Engine Model:</b>	WP10D264E200
<b>Engine Type:</b>	6 Cylinders, in Line
<b>Displacement:</b>	9.726L
<b>Advertised Power/Speed:</b>	240KW/1500rpm
<b>Standby Power/Speed</b>	264KW/1500rpm
<b>Aspiration :</b>	T-charged & Intercooled
<b>Cooling Method:</b>	Water-cooled
<b>Emission Standard:</b>	Euro II
<b>Fuel Consumption:</b>	≤200g/kW.h
<b>Packing Size(L*W*H):</b>	-
<b>Gross Weight:</b>	-
<b>Delivery Time:</b>	10-20 working days
<b>Payment Terms:</b>	T/T ,L/C

### Weichai WP10D264E200 Diesel Generator Engine

General Information of Weichai WP10D264E200 Diesel Generator Engine	
Engine Model	WP10D264E200
Engine Type	6 Cylinders, in Line
Displacement	9.726L
Bore*Stroke(mm)	126*130
Ignition Sequence	1-5-3-6-2-4
Emission Standard	Euro II
Net Weight	-
Overall Dimension(L*W*H)	-
Technical Specification of Weichai WP10D264E200 Diesel Generator Engine	
Fuel System	Direct Injection Pump

Aspiration	T-charged & Intercooled
Power Output type	Continuous
Electrical System(Starter Motor/Alternator)	12V/24V
Cooling Method	Water Cooled
Governor Type	Mechanical/Electronic Governor

Performance Data of Weichai WP10D264E200 Diesel Generator Engine

Advertised Power/Speed	240kW/1500rpm
Standby Power/Speed	264kW/1500rpm
Fuel Consumption	≤200g/kW.h
Governor Rate	≤5%
Max. Continuous Running Altitude	3000 m